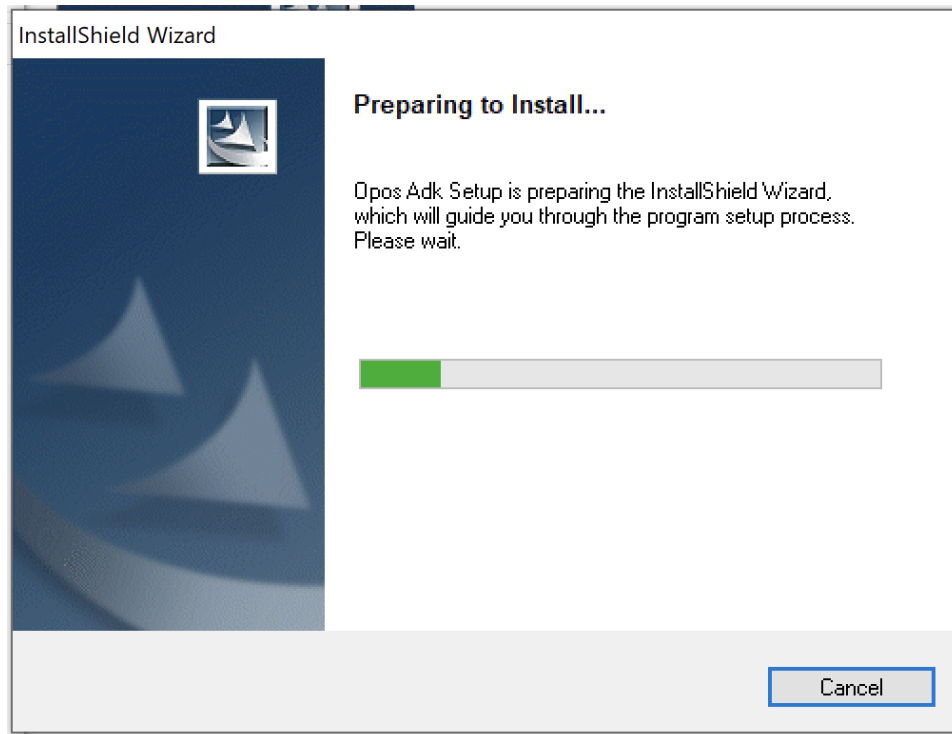
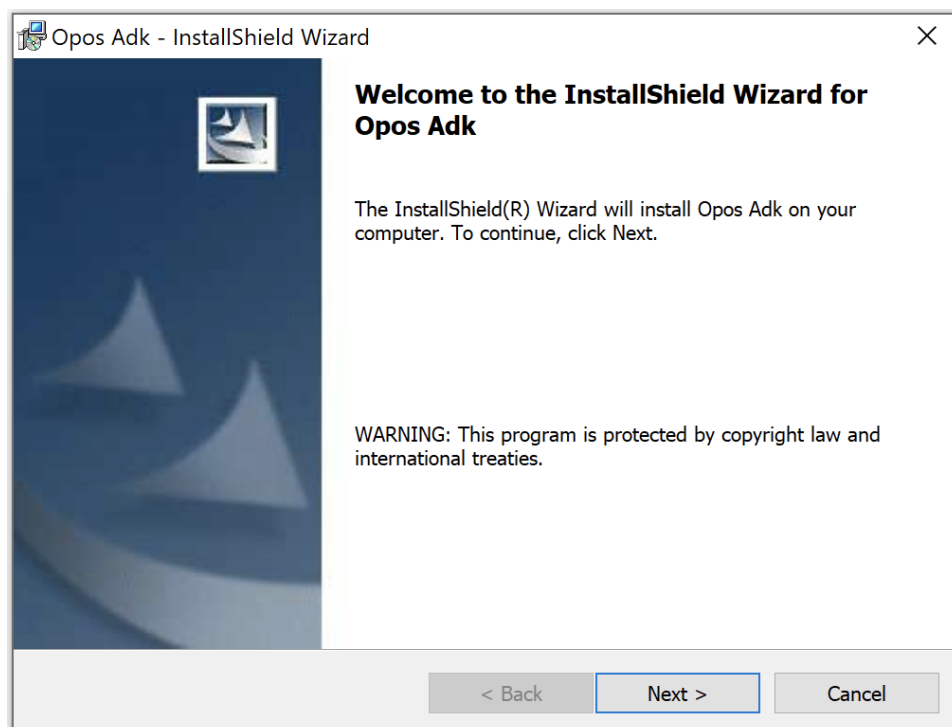


## 1. Installation

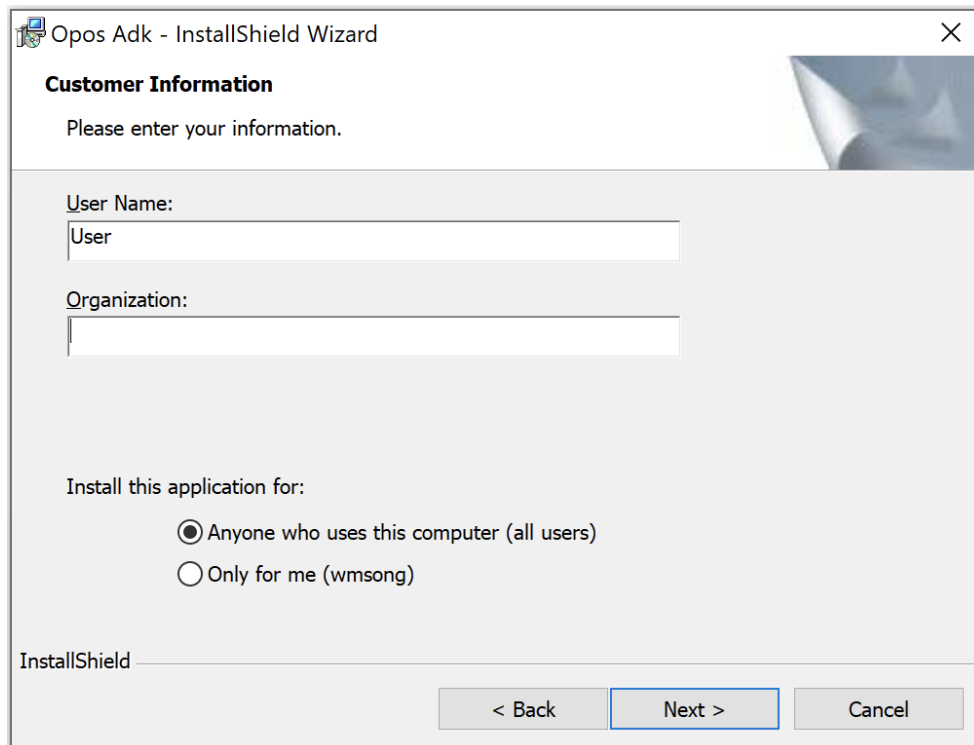
Run **Setup.exe**



Click **Next**

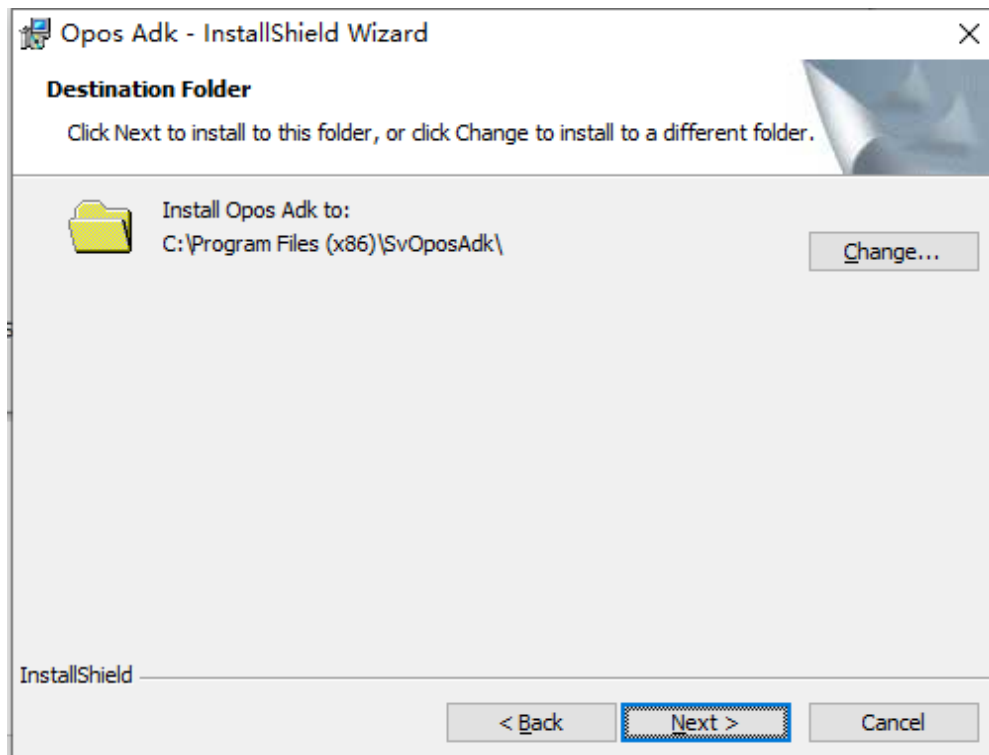


Enter your information, Click **Next**



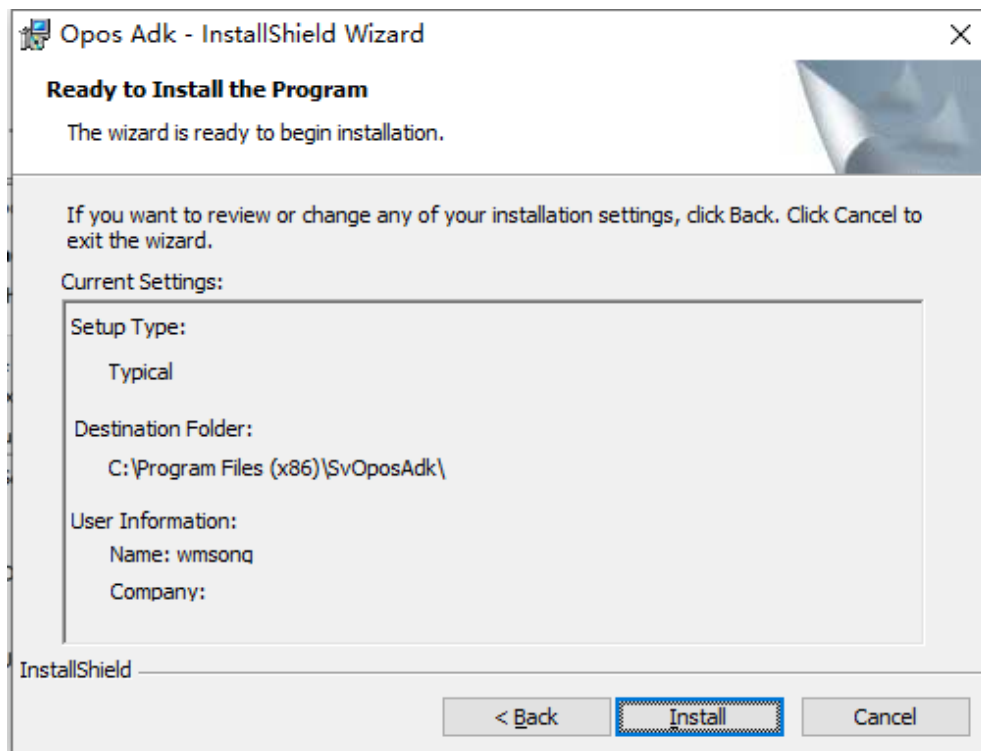
The screenshot shows the 'Customer Information' step of the 'Opos Adk - InstallShield Wizard'. The window title is 'Opos Adk - InstallShield Wizard'. Below the title bar, there is a close button (X) and a decorative graphic of a pen tip. The main heading is 'Customer Information' followed by the instruction 'Please enter your information.' There are two text input fields: 'User Name:' with the text 'User' entered, and 'Organization:' which is empty. Below these fields, there is a section titled 'Install this application for:' with two radio button options: 'Anyone who uses this computer (all users)' (which is selected) and 'Only for me (wmsong)'. At the bottom left, the text 'InstallShield' is visible. At the bottom right, there are three buttons: '< Back', 'Next >' (which is highlighted with a blue border), and 'Cancel'.

Click **Next** to install or click **Change** to install to a different folder

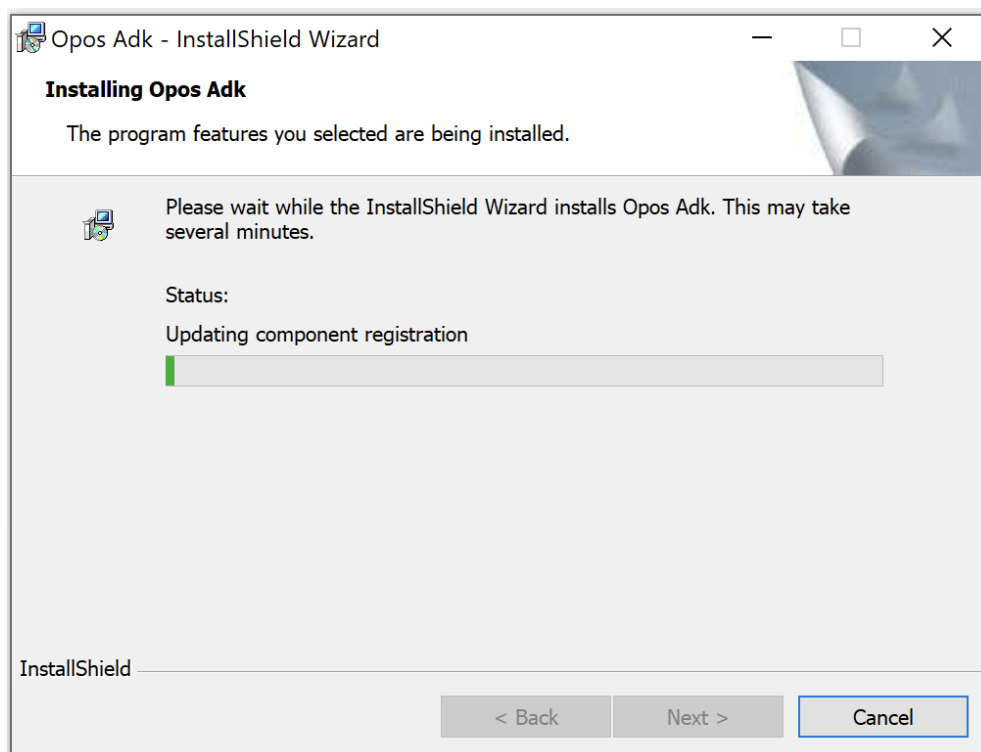


The screenshot shows the 'Destination Folder' step of the 'Opos Adk - InstallShield Wizard'. The window title is 'Opos Adk - InstallShield Wizard'. Below the title bar, there is a close button (X) and a decorative graphic of a pen tip. The main heading is 'Destination Folder' followed by the instruction 'Click Next to install to this folder, or click Change to install to a different folder.' There is a folder icon next to the text 'Install Opos Adk to:' and the path 'C:\Program Files (x86)\SvOposAdk\'. To the right of the path is a button labeled 'Change...'. At the bottom left, the text 'InstallShield' is visible. At the bottom right, there are three buttons: '< Back', 'Next >' (which is highlighted with a blue border), and 'Cancel'.

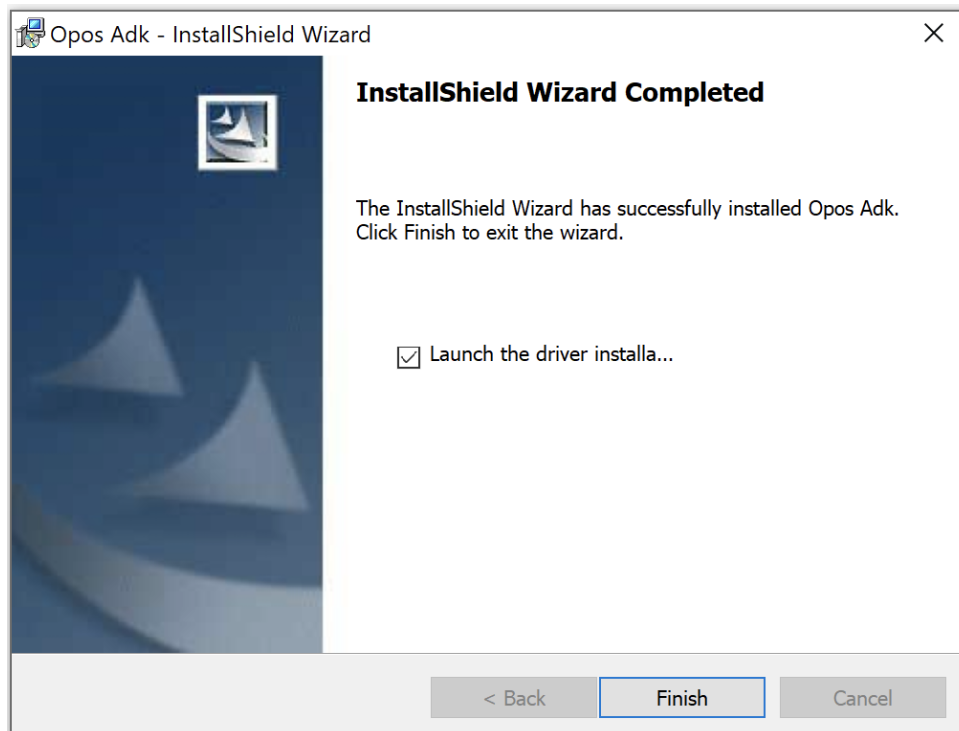
Click **Install** to begin installation



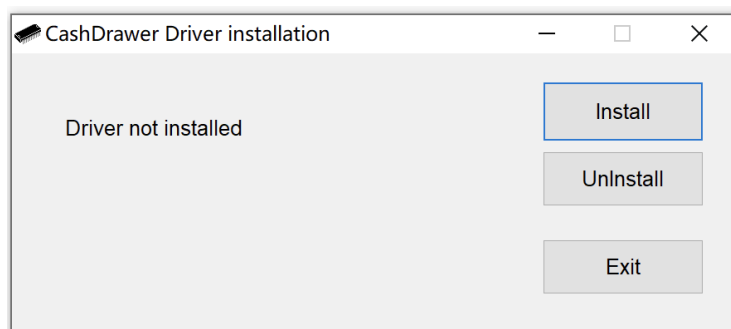
Installing...



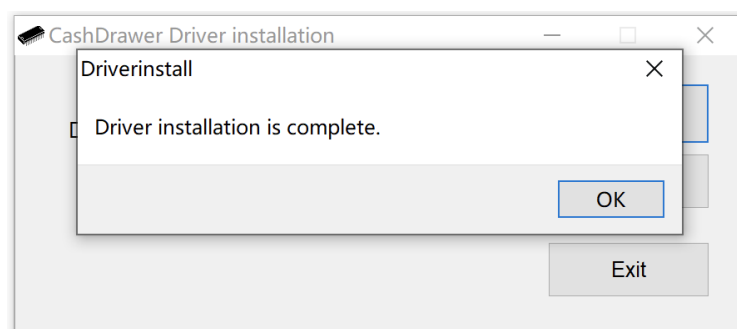
Install completed. Check **Launch the driver installation** and Click **Finish**



Click **Install** to Install the Driver for CashDrawer.



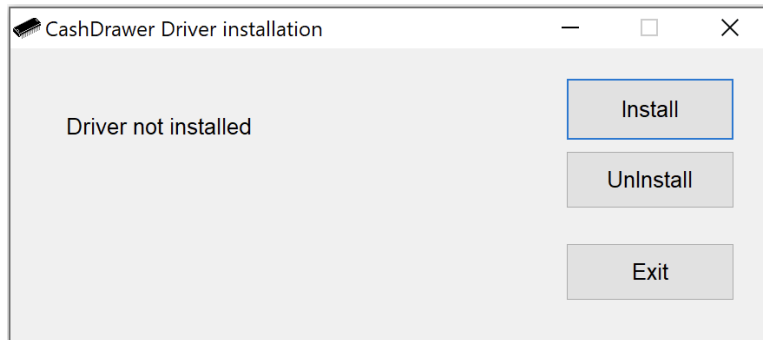
Driver installation is complete. Click **OK** and Click **Exit** to complete the installation



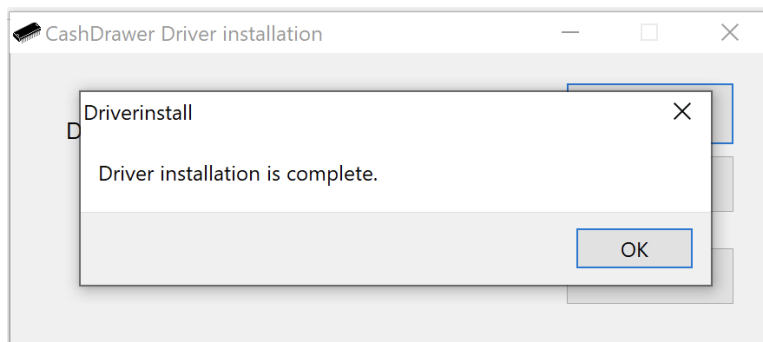
## 2. Driver Install

You can install the driver when installing the program. If it is not installed at that time, you can reinstall it as follows.

Menu **Start** -> **Opos Adk** -> **DriverInstall**



Click **Install**

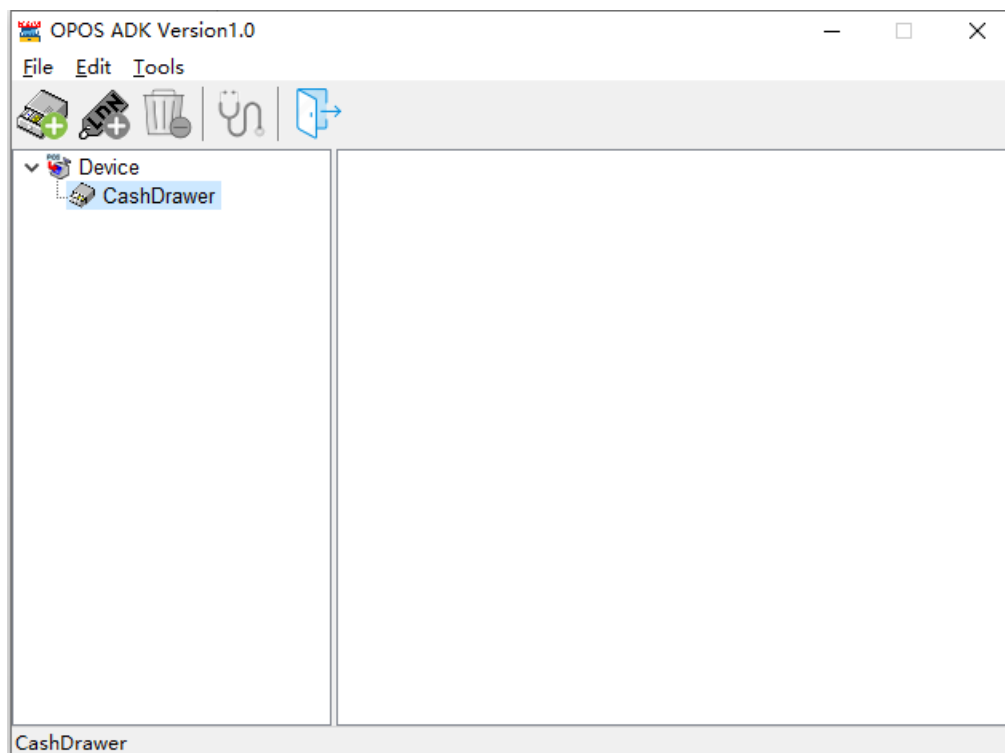


### 3. Setup

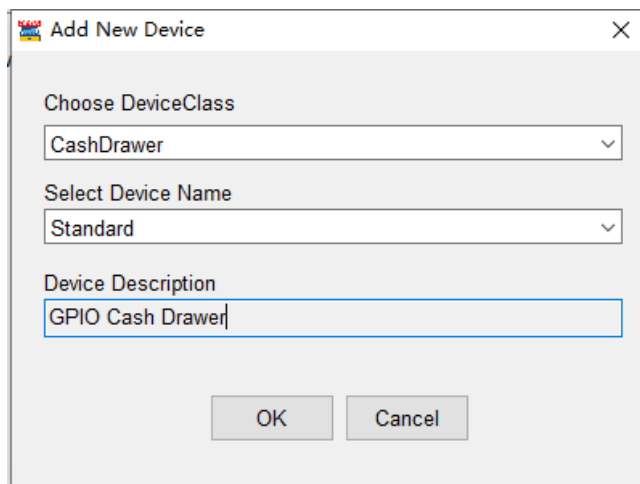
Menu **Start** -> **Opos Adk** -> **SetupOPOS**

#### a) Add New Device

Expand list -> Focus on **CashDrawer** -> Click Menu **Edit-Add New Device** or toolbar **Add New Device**

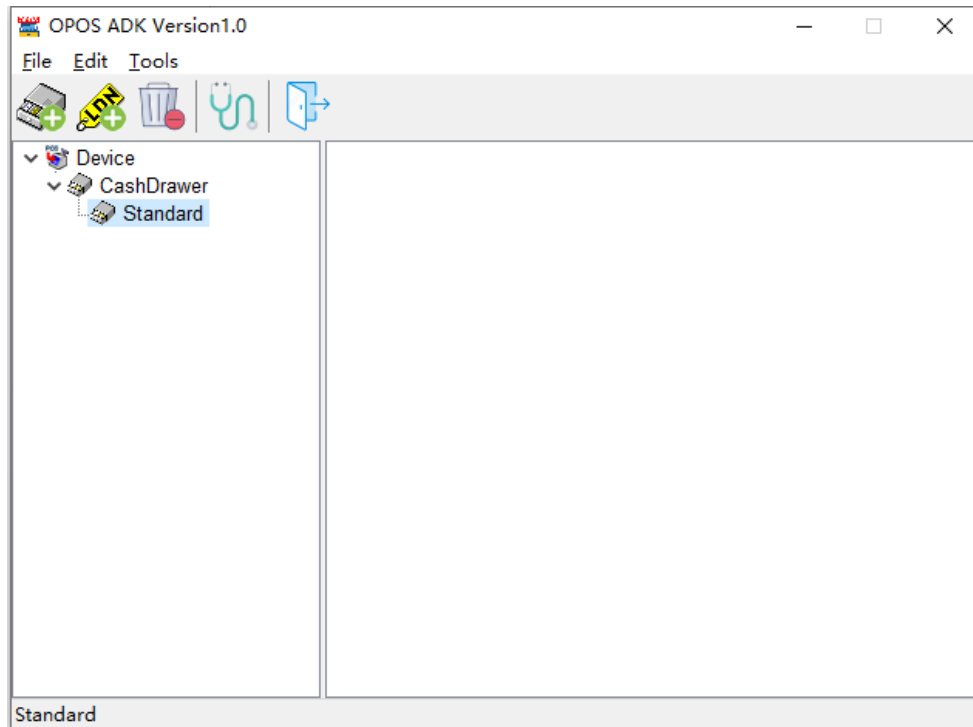


Select Device Name -> Click **OK** to finish

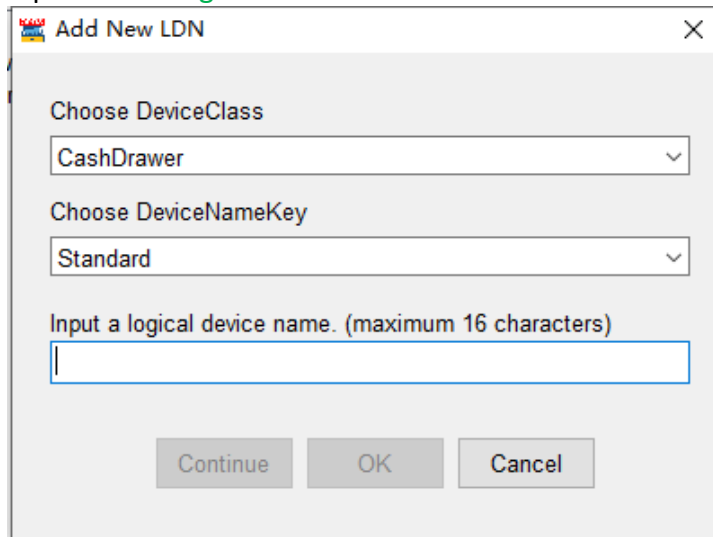


## b) Add New LDN

Expand list -> Focus on Device Name (As **Standard**) -> Click Menu **Edit-Add New LDN** or toolbar **Add New LDN**

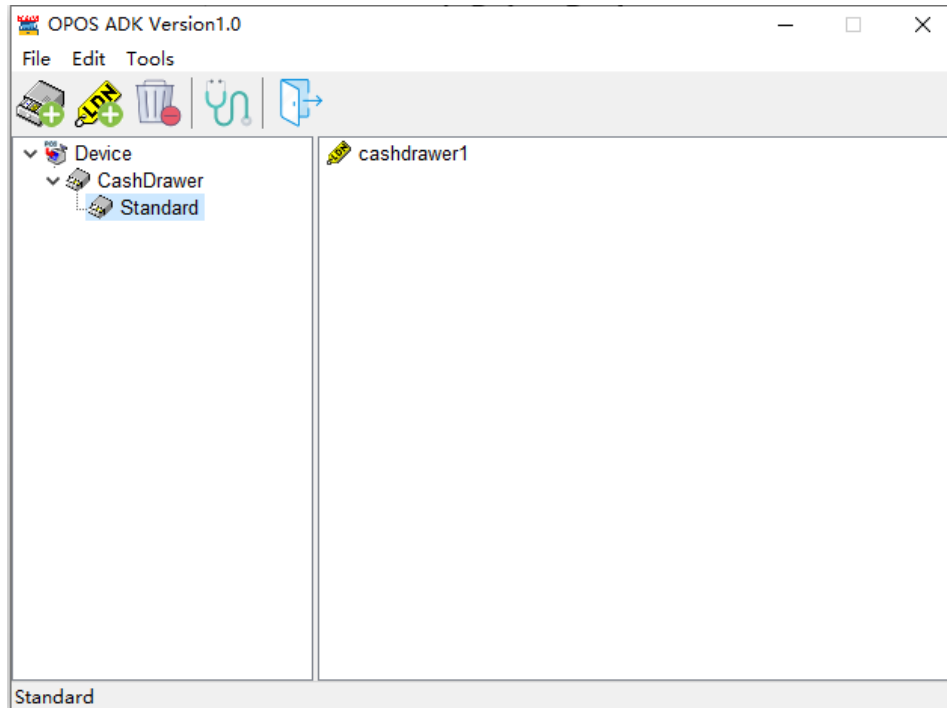


Input a new **Logical Device Name** -> Click **Continue** or Click **OK** to finish.

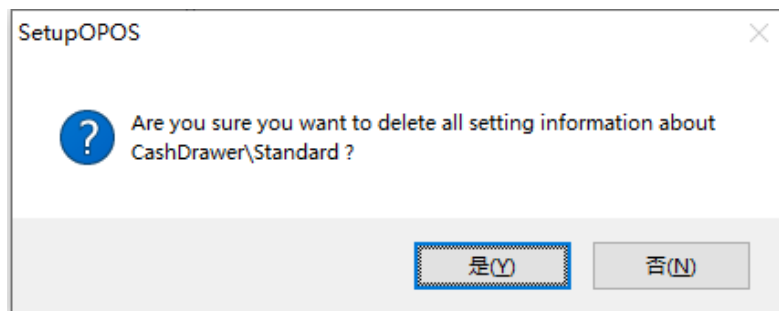


### c) Delete Device

Expand list -> Focus on Device Name (As **Standard**) -> Click Menu **Edit-Delete** or toolbar **Delete**



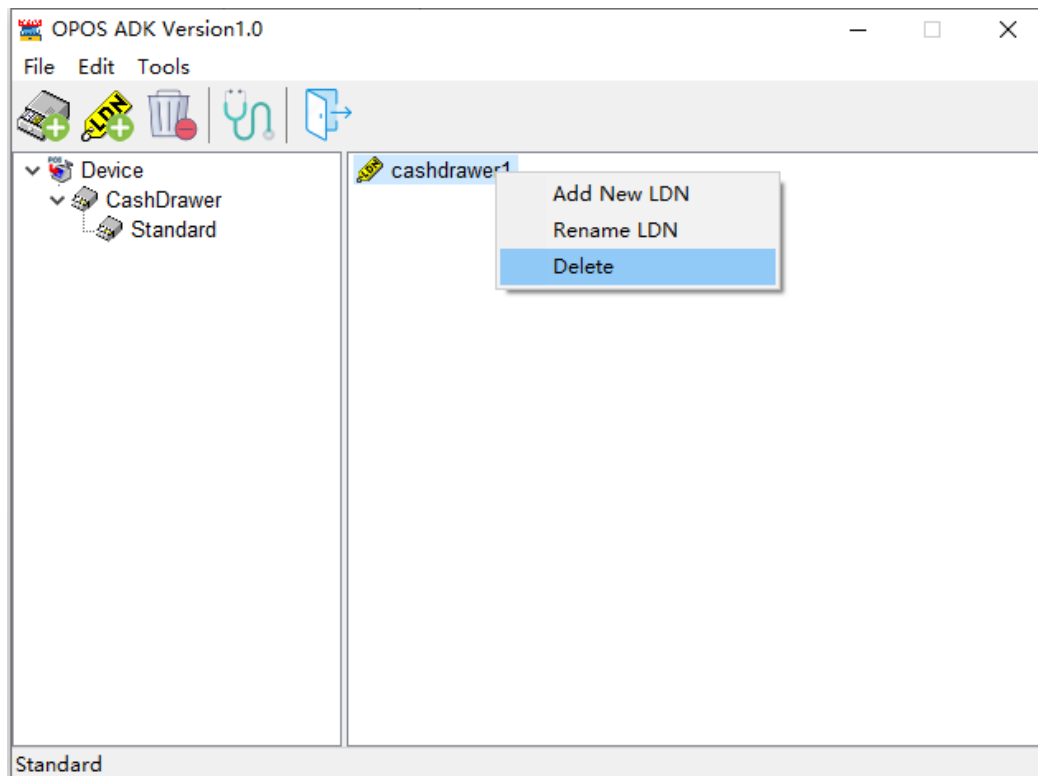
Click **Yes** to delete device.



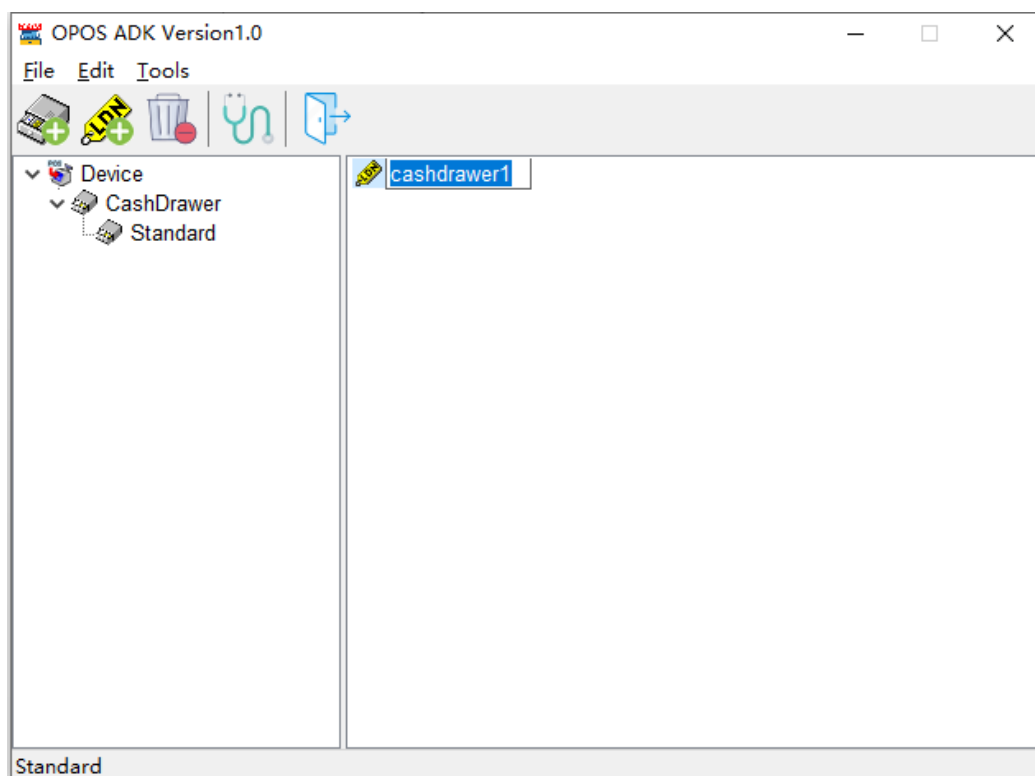


## d) Rename LDN & Delete LDN

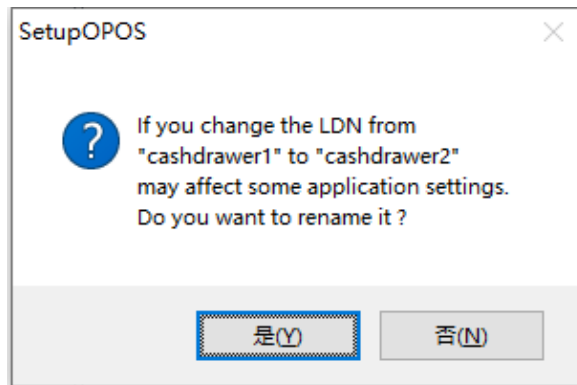
Expand list -> Focus on LDN Name (As **cashdrawer1**) -> Click Menu **Edit** or **Right click popup menu**



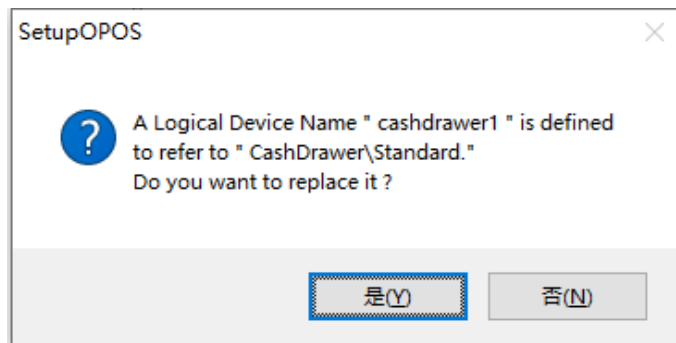
**Rename LDN** : Input new LDN name



Click **Yes** to rename LDN name.

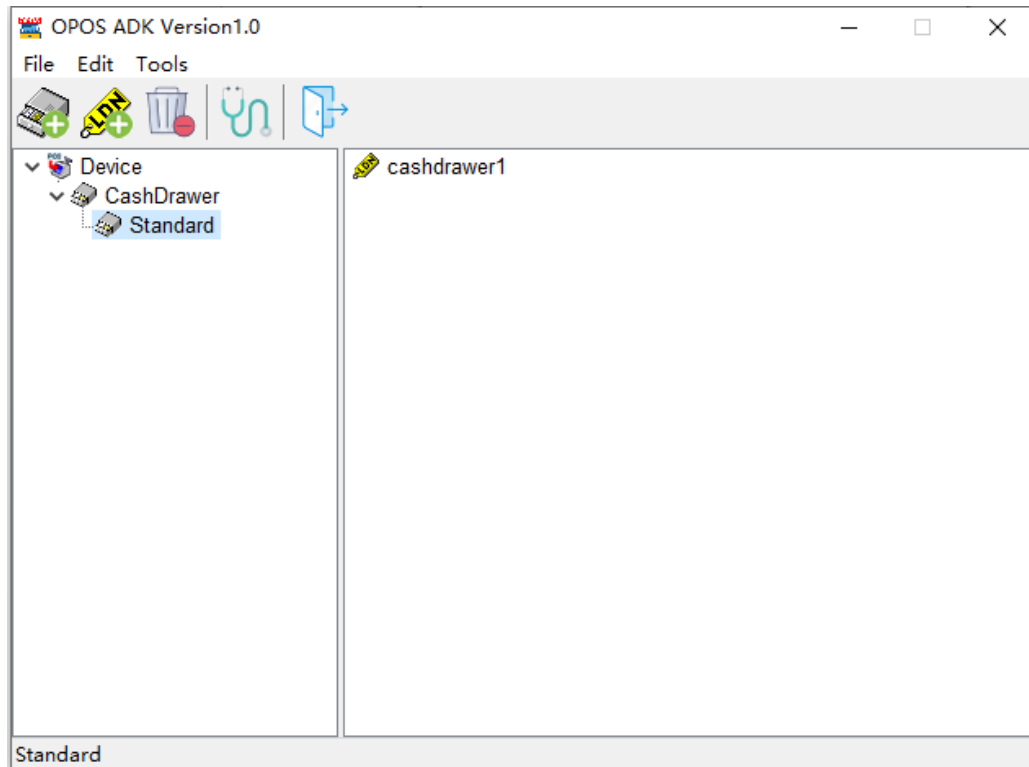


**Delete LDN** : Click **Yes** to Delete LDN name.

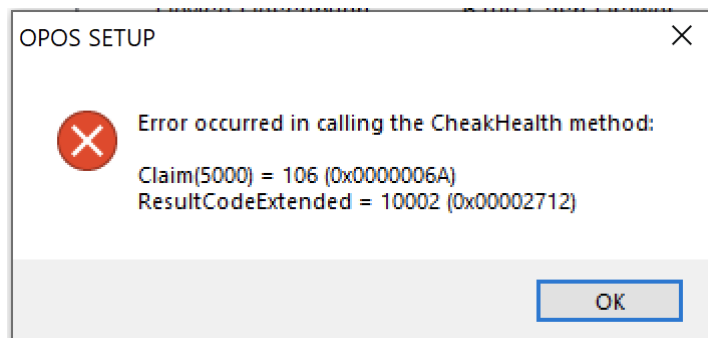


## e) CheckHealth

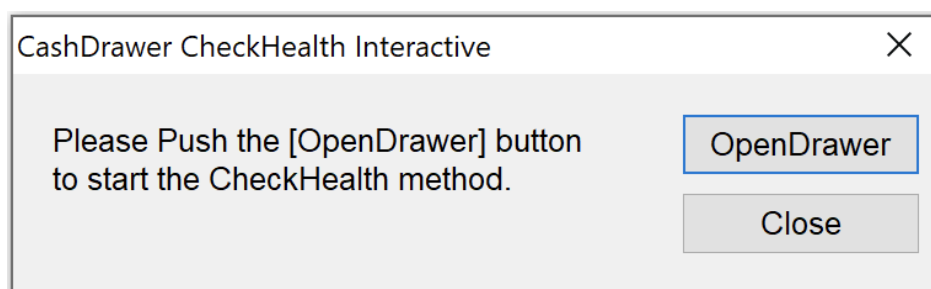
Expand list -> Focus on Device Name (As **Standard**) -> Click Menu **Tools-CheckHealth** or toolbar **CheckHealth**



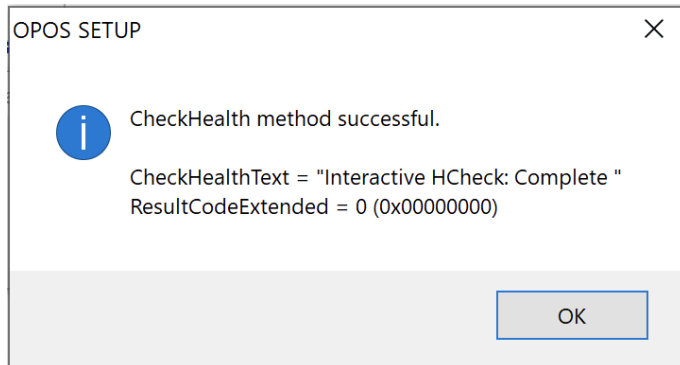
If there is an error, the following prompt will pop up:  
(**ResultCodeExtended** refer [Part 5](#))



If there are no errors, the **CheckHealth** window will pop up:

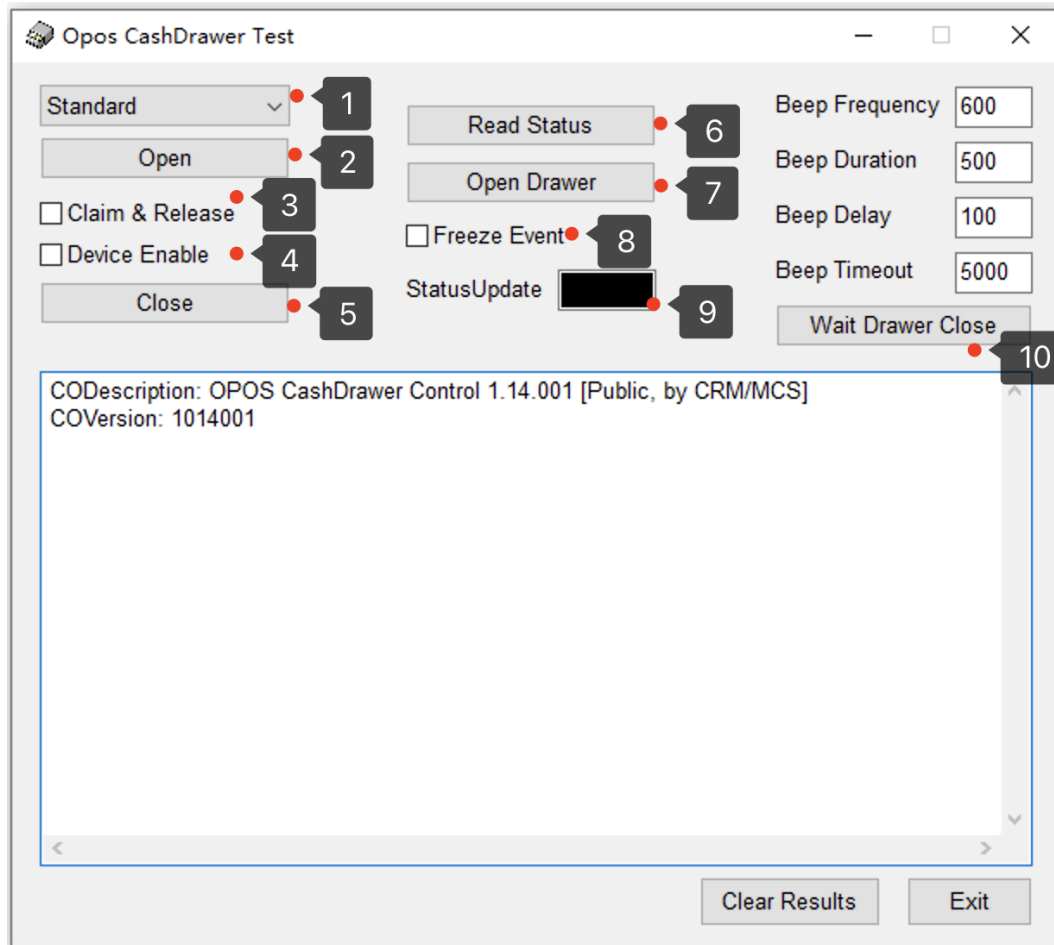


**CheckHealth** is completed and closed, the following prompt pops up:



## 4. Test

Menu **Start** -> **Opos Adk** -> **CashDrawerTest**



- 1) Select the device name to open.
- 2) **[Open]** Opens a device for subsequent I/O.
- 3) **[Claim]** Requests exclusive access to the device.  
**[Release]** Releases exclusive access to the device.
- 4) **[Device Enable]** If true, the device is in an operational state. If false, the device has been disabled.
- 5) **[Close]** Releases the device and its resources.  
If the DeviceEnabled property is true, then the device is disabled.  
If the Claimed property is true, then exclusive access to the device is released.
- 6) **[Read Status]** If true, the drawer is open. If false, the drawer is closed.
- 7) **[Open Drawer]** Opens the drawer.
- 8) **[Freeze Event]** If true, the UnifiedPOS Control will not deliver events (Status of the Cash Drawer changes). If false, the application allows events to be delivered.
- 9) **[Status Update]** When the status of the Cash Drawer changes to inform the application of the current state.
- 10) **[Wait Drawer Close]** Waits until the cash drawer is closed. If the drawer is still open after beepTimeout milliseconds, then the system alert beeper is started.

## 5. ResultCodeExtended

Code	Explain
<b>10001</b>	Error loading dynamic library
<b>10002</b>	Error loading driver
<b>10003</b>	Wrong model
<b>10999</b>	Unknown error