

X5 Install M11 Dual Display

Required Tool:



Pry Tool



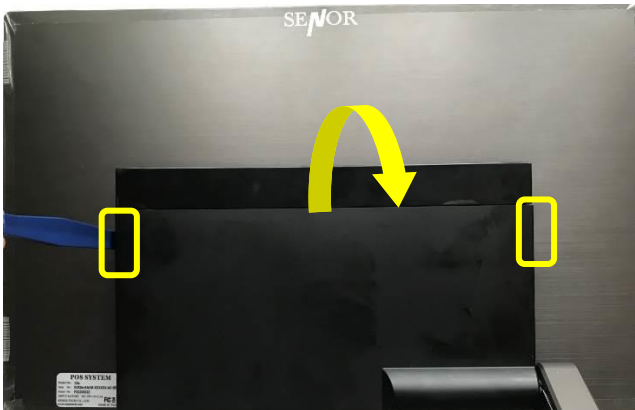
Tweezer



Flat Precision Screwdriver

Process:

1. Pry the side slots of the back cover to detach the back cover.



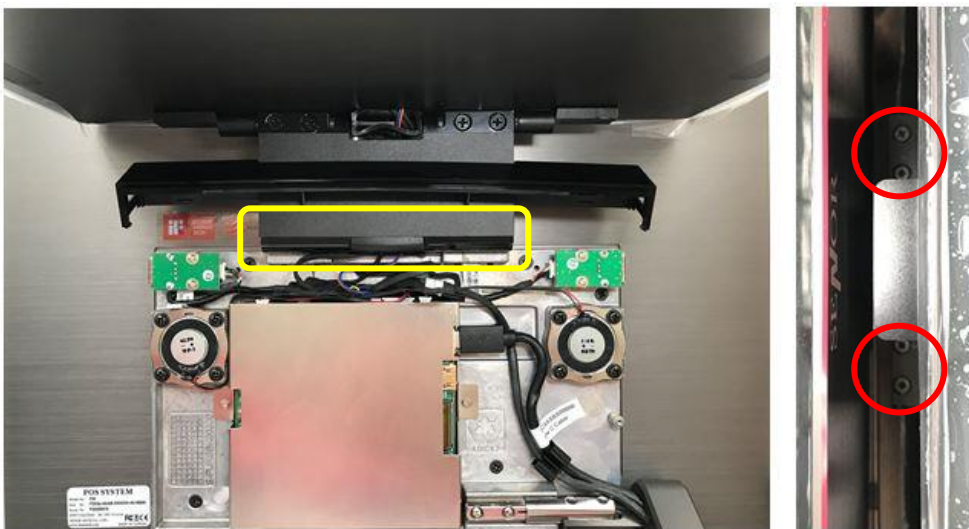
2. Detach the top cover.



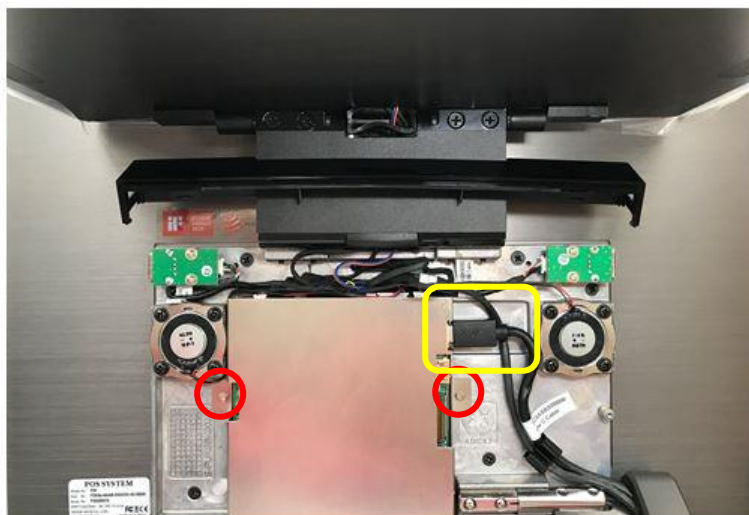
3. Let the dual display bracket and cables through the opening in the middle of the top cover.



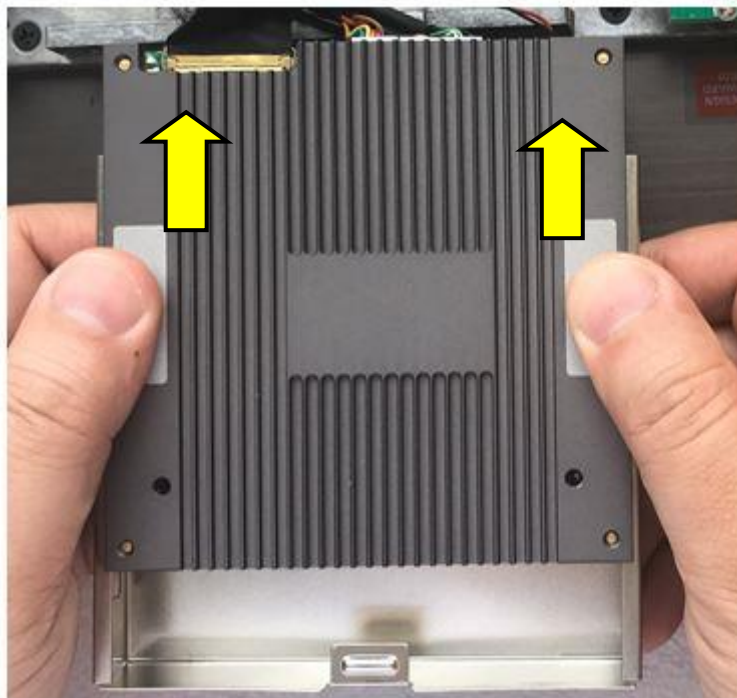
4. Secure the dual display by installing the screws.



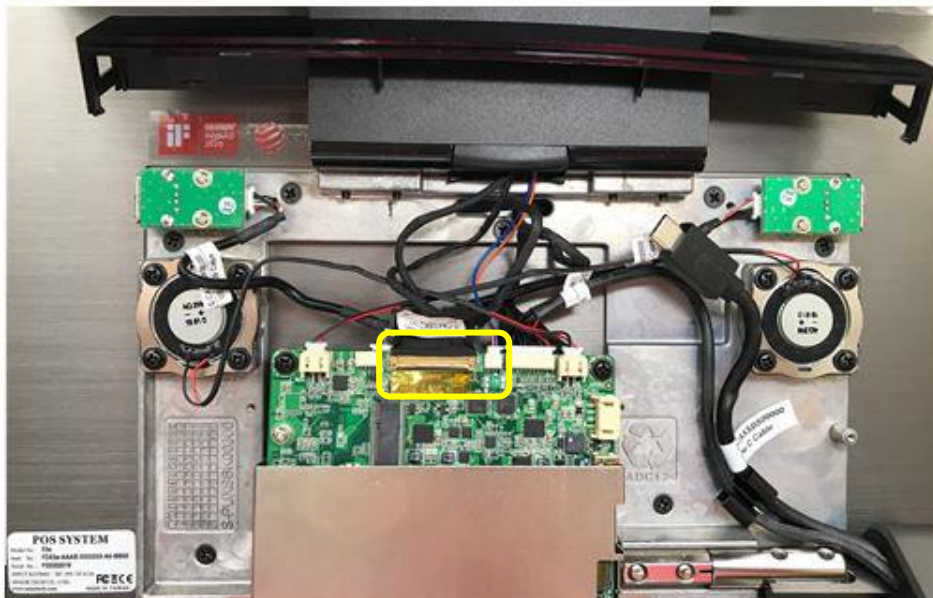
5. Disconnect the cable and remove the screws to detach the motherboard assembly.



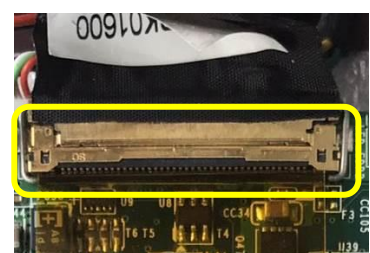
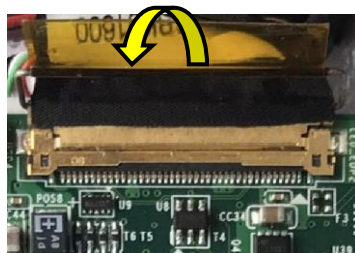
6. Slide out the heat sink from the motherboard cover.



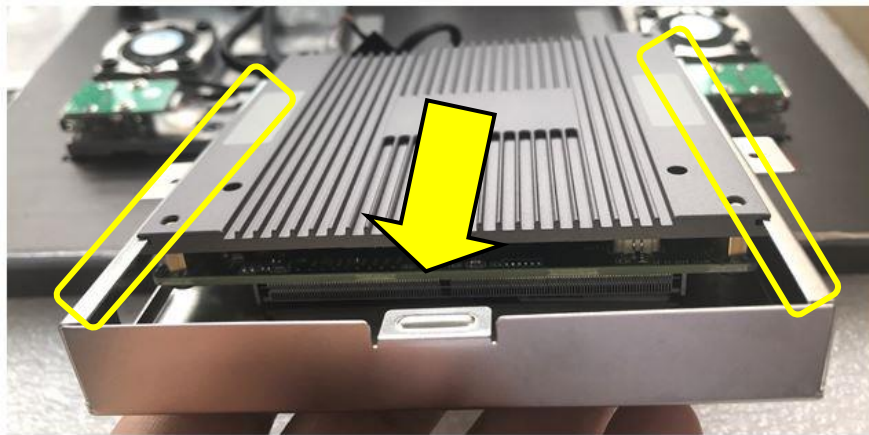
7. Connect the cables to the motherboard.



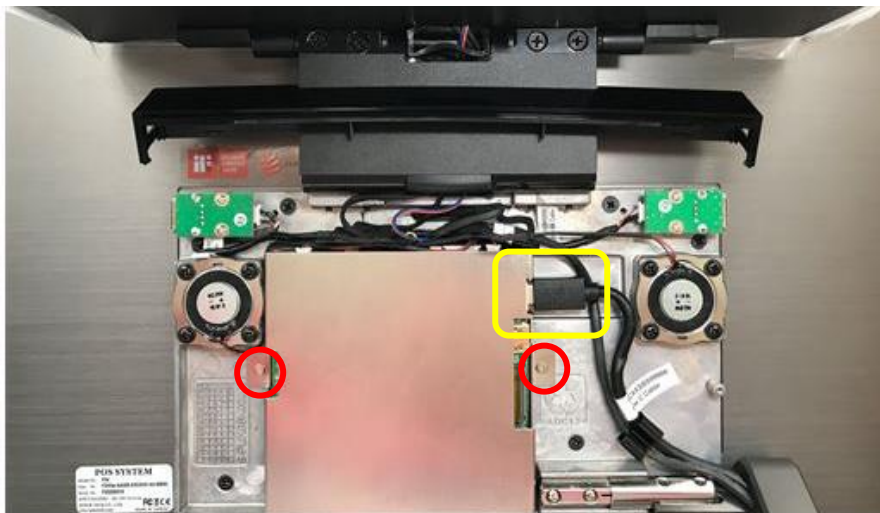
Attention : The LCD cable is fragile, so hold and push the connector to connect the cable instead of pushing the cable to connect.



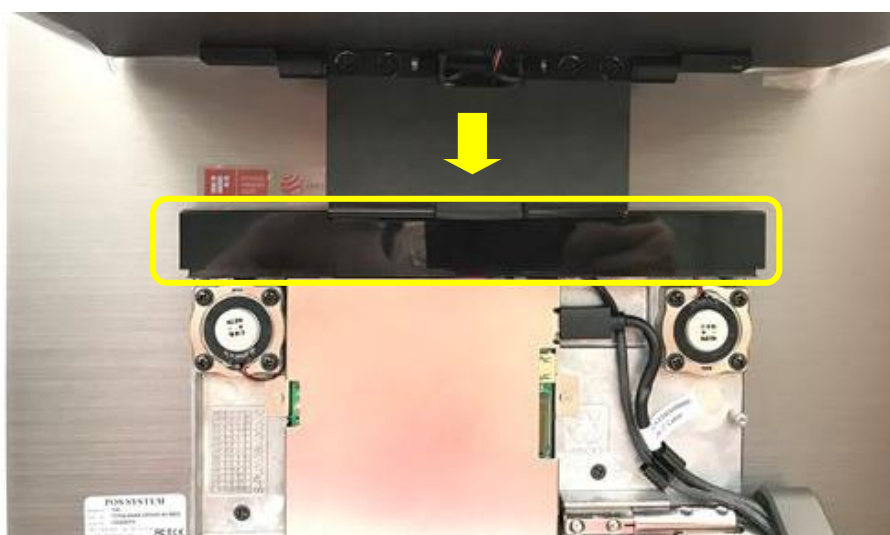
8. Install the motherboard cover by aligning grooves of the heat sink to motherboard cover.



9. Secure the motherboard assembly with screws, then connect the cable.



10. Move the top cover back in place.



11. Install the back cover by aligning the top edge of the back cover to top cover, and then press the side edges of back cover. Finish.

